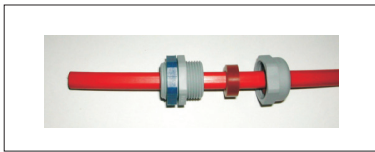
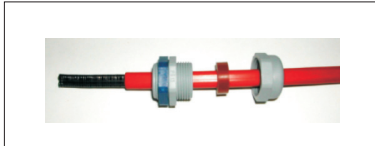


PCxT splice kit

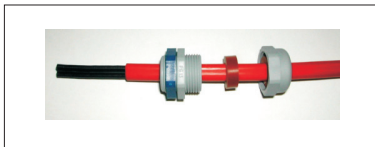
Cable head assembly



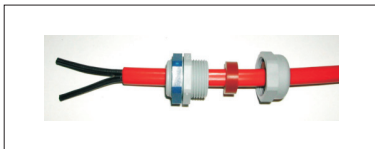
**Pull the gland and its nuts as shown on the picture
If the cable is braided, also pull over the braid**



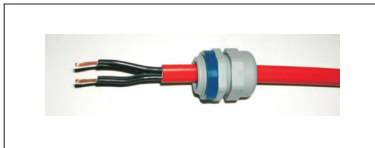
**Remove the external jacket on about 60mm, taking care
not to damage the insulation of bus wires
located underneath**



Introduce the gland and its nut

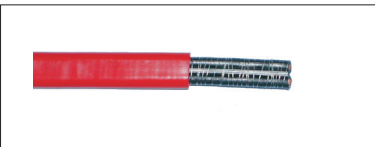


**Separate the two bus wires
with a cutter (do not tear)**



**Bare both ends of bus wires, with a cutter.
Usual electrical tests have to be done before connection**

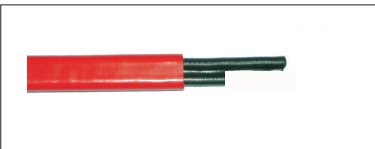
Cable end assembly



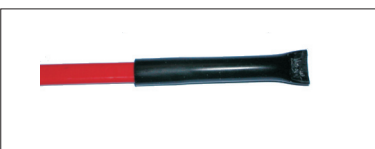
**Remove the external jacket, taking care not to damage
the insulation of
bus wires located underneath**



**Remove entirely the resistive wire placed on the bus wires
and cut it flush with the insulating jacket.
Do not try to connect it**



**Shorten one of the bus wires in order
to avoid any contact**



**Fill the end cap with silicon rubber and push it on the cable
extremity.
Let silicon dry before use**